

**We Know How To
Charge Your Batteries**



Pacific

BALMAR[®]
WWW.BALMAR.NET
DC CHARGING SOLUTIONS

Smart Ready[®] Technology for Yanmar Engines Equipped with Valeo Alternators

**Now Yanmar Owners can add Balmar Smart Regulation
without Disposing of the Valeo 120A/12V Alternator
Present on Recent Production Engines**

**A Simple Retrofit of the Valeo Alternator
Converts the Valeo to Accept
Balmar's Famous Multi-Stage External Regulators**

- Reduce the Cost of Adding Balmar Multi-Stage Regulation by Half
- Balmar's Patented Smart Ready[®] Design
- The Internal Regulator provides "Come-Home" Capability if the External Regulator Fails (12V versions only)
- Temperature Sensing provides Protection for your Battery and Alternator to Prevent Damage from Overheating
- Perfect for Large AGM or Lithium Battery Banks
- Kits Come with All Required Conversion Parts
- Conversion can be Completed in 30 Minutes
- 12V and 24V* Versions Available
- Balmar's Industry-Best Application and Technical Support

| Part Number | Description |
|----------------------|---|
| 30-SR12-02 | Smart Ready[®] Retrofit Kit Only (Kit Contents: Internal Regulator Retrofit and Replacement Cover) |
| ARS-5-VL-01 | ARS-5 Kit (12V) (Kit Contents: 30-SR12-02, ARS-5 Regulator & Temp Sensor Cables) |
| MC-614-VL-01 | Max Charge Kit (12V) (Kit Contents: 30-SR12-02, MC-614 Regulator & Temp Sensor Cables) |
| MC-624-VL-01* | Max Charge Kit (24V) (Kit Contents: Internal Dummy, MC-624 Regulator & Temp Sensor Cables) |

*MC-624-VL-01 (24V Version) is not Smart Ready[®]

**New
for
2017**



ARS-5-VL-01



MC-614-VL-01



MC-624-VL-01



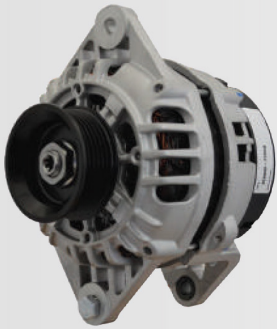
AEP Pacific T: +64 9 4145520

www.aeppacific.co.nz

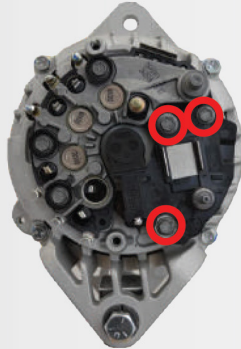
E: sales@aeppacific.co.nz

Quick & Easy Installation

*Required Tools: 7mm & 8mm Nut Drivers, 13mm Wrench
Kit includes Tool for Installing Brushes*



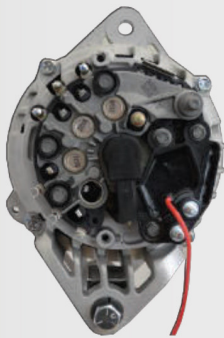
Valeo 12V PN: 128990-772250
Valeo 24V PN: 129677-77250



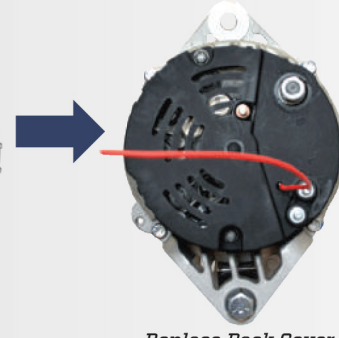
*Remove the Back Cover (2 screws)
Alternator can Stay on the Engine
Remove Standard Internal Regulator (3 screws)*



*New Smart Ready[®]
Internal Regulator
(30-SR12-02)*



*Install Smart Ready[®]
(same 3 screws)*



*Replace Back Cover
New Cover Provided in 12V Kit
(same 2 screws)*

Balmar's Multi-Stage, Smart Charging Technology delivers the benefits found in shore power charging systems for your on-board, alternator-based charging system, including:

- 30% Faster, More Complete Charging
- User-Selectable Preset Battery Programs
- Advanced Programming Modes
- Over-Temperature Protection
- Detuning Capabilities for Belt Load Management and Reducing Alternator Wear
- Longer Battery and Alternator Life
- Less Fuel Consumption



Optimize Your Charging System and Experience the Balmar Difference!

Yanmar Engine Models Equipped with a Valeo 120A/12V Alternator

| Model # | Serial Number |
|-----------|----------------|
| 2YM15 | E05891 & after |
| 3YM20 | E11910 & after |
| 3YM30E | E20848 & after |
| 3JH5E | E12749 & after |
| 4JH5E | E14236 & after |
| 4JH4-TE | E15602 & after |
| 4JH4-THE | E24940 & after |
| 4JH4-HTE1 | E40232 & after |
| 4JH3-DTE | E35417 & after |

Operating Specifications

| Parameter | Min | Max |
|----------------------------------|----------|--------|
| Operating Temperature Range | -30°C | 125°C |
| Voltage Set Point | 14.0V | 14.2V |
| Load Regulation | - | -0.6V |
| Saturation Voltage 5A @ 12 Volts | - | -0.5V |
| Temperature Coefficient | -6mV/°C | 0mV/°C |
| Standby Current | - | 2mA |
| Cut-In Speed | 1200 RPM | |



AEP Pacific T: +64 9 4145520

www.aeppacific.co.nz

E: sales@aeppacific.co.nz