

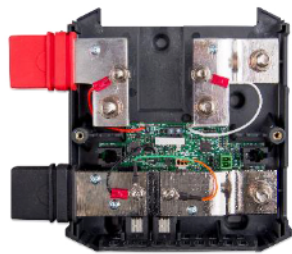
# Lynx Shunt VE.Can

DC Busbars with integrated battery monitor and main fuse holder

[www.victronenergy.co.nz](http://www.victronenergy.co.nz)



Lynx Shunt VE.Can



Lynx Shunt VE.Can without cover



RJ45 VE.Can terminator

## Busbar integrated battery monitoring

The Lynx Shunt VE.Can contains a positive and negative busbar, a battery monitor and a fuse holder for the main system fuse. It is part of the Lynx Distribution system.

The Lynx Distributor has a power LED.

The Lynx Shunt VE.Can can communicate via VE.Can with an GX device.

The Lynx Shunt VE.Can ships with two RJ45 VE.Can terminators, these are used when connecting to a GX device.

The Lynx Shunt VE.Can is designed to hold a CNN fuse. The fuse needs to be purchased separately. For more info see section [Fusing](#) in the Lynx Shunt VE.Can manual.

## The Lynx Distribution System

The Lynx Distribution System is a modular busbar system that incorporates DC connections, distribution, fusing, battery monitoring and/or Lithium battery management. For more information also see the [DC Distribution Systems product page](#).

The Lynx Distribution System consist of the following parts:

- **Lynx Power In** - A positive and negative busbar with 4 connections for batteries or DC equipment.
- **Lynx Distributor** - A positive and negative busbar with 4 fused connections for batteries or DC equipment together with fuse monitoring.
- **Lynx Shunt VE.Can** - A positive busbar with a space for a main system fuse and a negative busbar with a shunt for battery monitoring. It has VE.Can communication for monitoring and setup with a GX device.
- **Lynx Smart BMS** - For use together with Victron Energy Smart Lithium batteries. It contains a positive busbar with a contactor that is driven by a battery management system (BMS) and a negative busbar with a shunt for battery monitoring. It has Bluetooth communication for monitoring and setup via the VictronConnect App and VE.Can communication for monitoring with a GX device and the VRM portal.



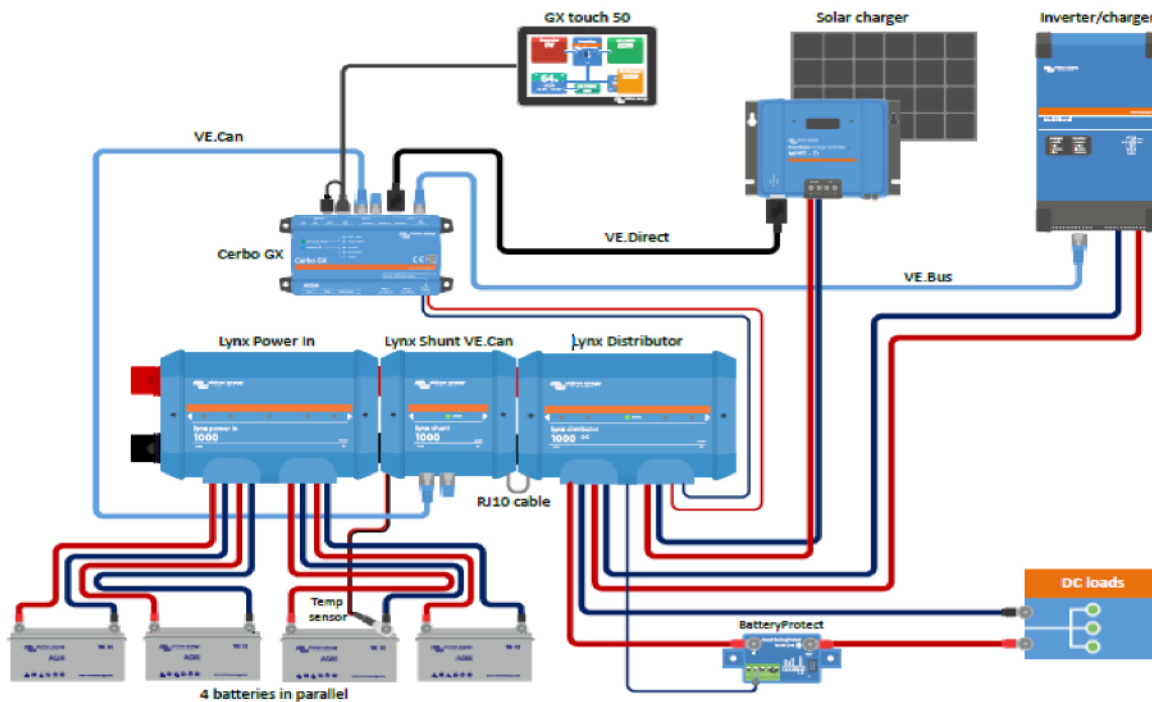
The Lynx modules: Lynx Power In, Lynx Distributor, Lynx Shunt VE.Can and Lynx Smart BMS

Lynx Shunt VE.Can		
POWER		
Supply voltage range		9 - 70 Vdc
Supported system voltages		12, 24 or 48V
Reverse polarity protection		No
Current rating		1000Adc continuous
Power consumption		60mA @ 12V 33mA @ 24V 20mA @ 48V
Potential free alarm contact		3A, 30Vdc, 250Vac
CONNECTIONS		
Busbar		M8
Fuse		M8
VE.Can		RJ45 and RJ45 terminator
Power supply connection to Lynx Distributor		RJ10 (a RJ10 cable ships with each Lynx Distributor)
Temperature sensor		Screw terminal
Relay		Screw terminal
PHYSICAL		
Enclosure material		ABS
Enclosure dimensions (h x w x d)		190 x 180 x 80 mm
Unit weight		1.4 kg
Busbar material		Tinned copper
Busbar dimensions (h x w)		8 x 30 mm
ENVIRONMENTAL		
Operating temperature range		-40°C to +60°
Storage temperature range		-40°C to +60°
Humidity		Max. 95% (non-condensing)
Protection class		IP22

### System example – Lynx Shunt VE.Can, Lynx Power In, Lynx Distributor and lead acid batteries

This system contains the following components:

- Lynx Power In with 4 paralleled 12V lead acid batteries.
- Identical cable lengths for each battery.
- Lynx Shunt VE.Can with main system fuse and battery monitor.
- Lynx Distributor with fused connections for inverter/charger(s), loads and chargers. Note that additional modules can be added if more connections are needed.
- Cerbo GX (or other GX device) to read out the battery monitor data.



System with Lynx Shunt VE.Can, lead acid batteries, a Lynx Shunt VE.Can and a Lynx Distributor